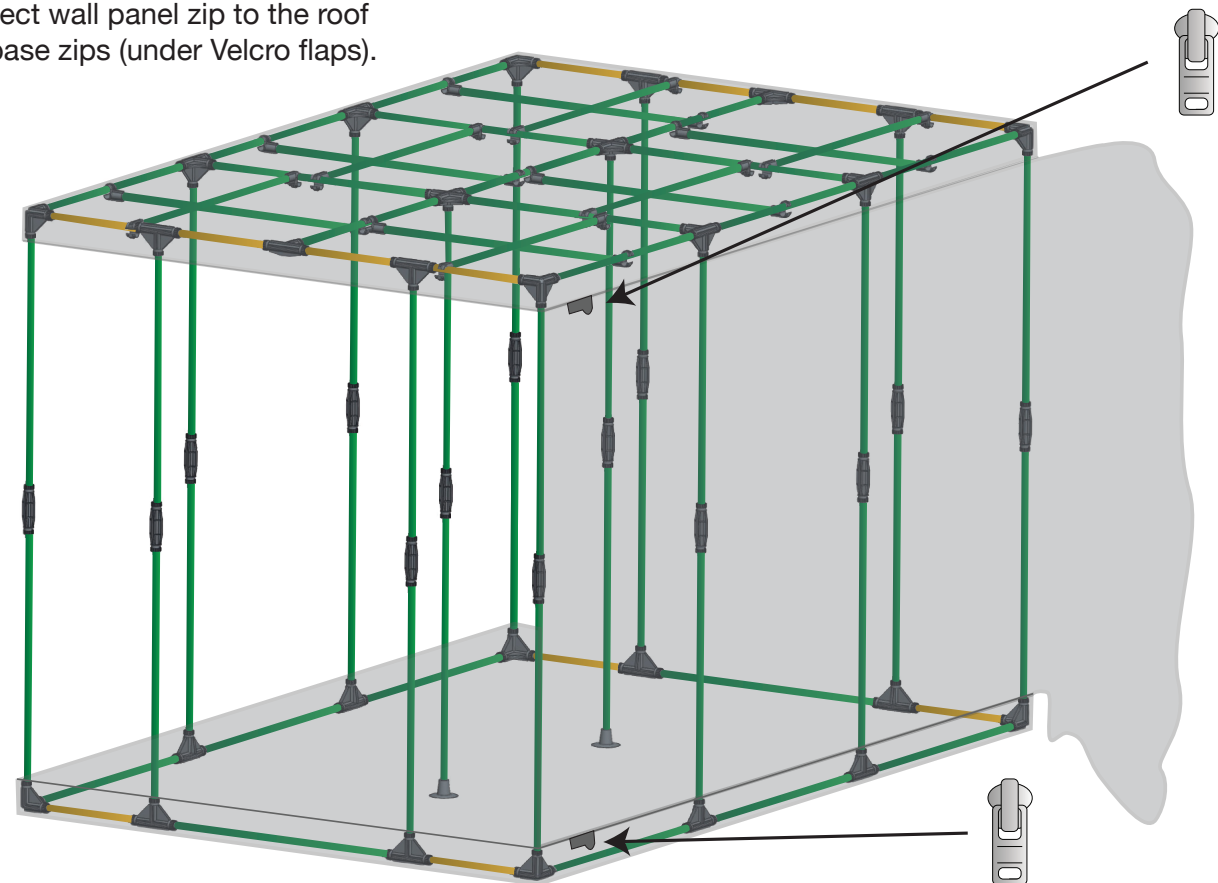


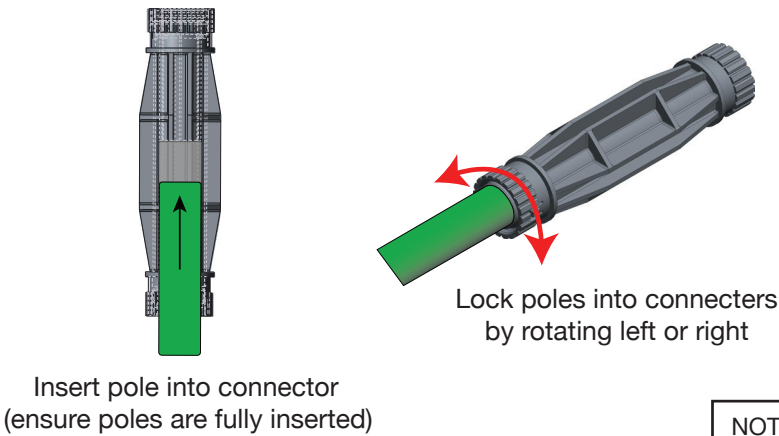
Step 5

Connect wall panel zip to the roof and base zips (under Velcro flaps).

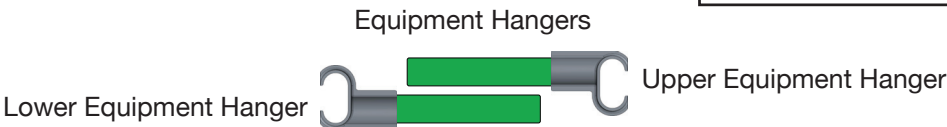
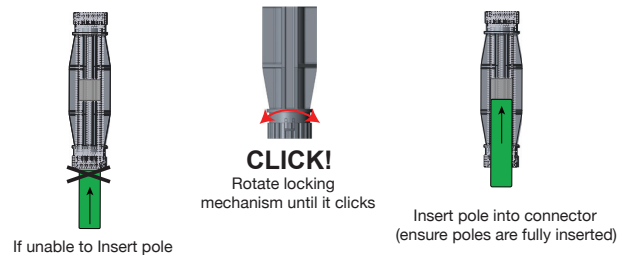


Assembly Instructions

Two Person Assembly Recommended

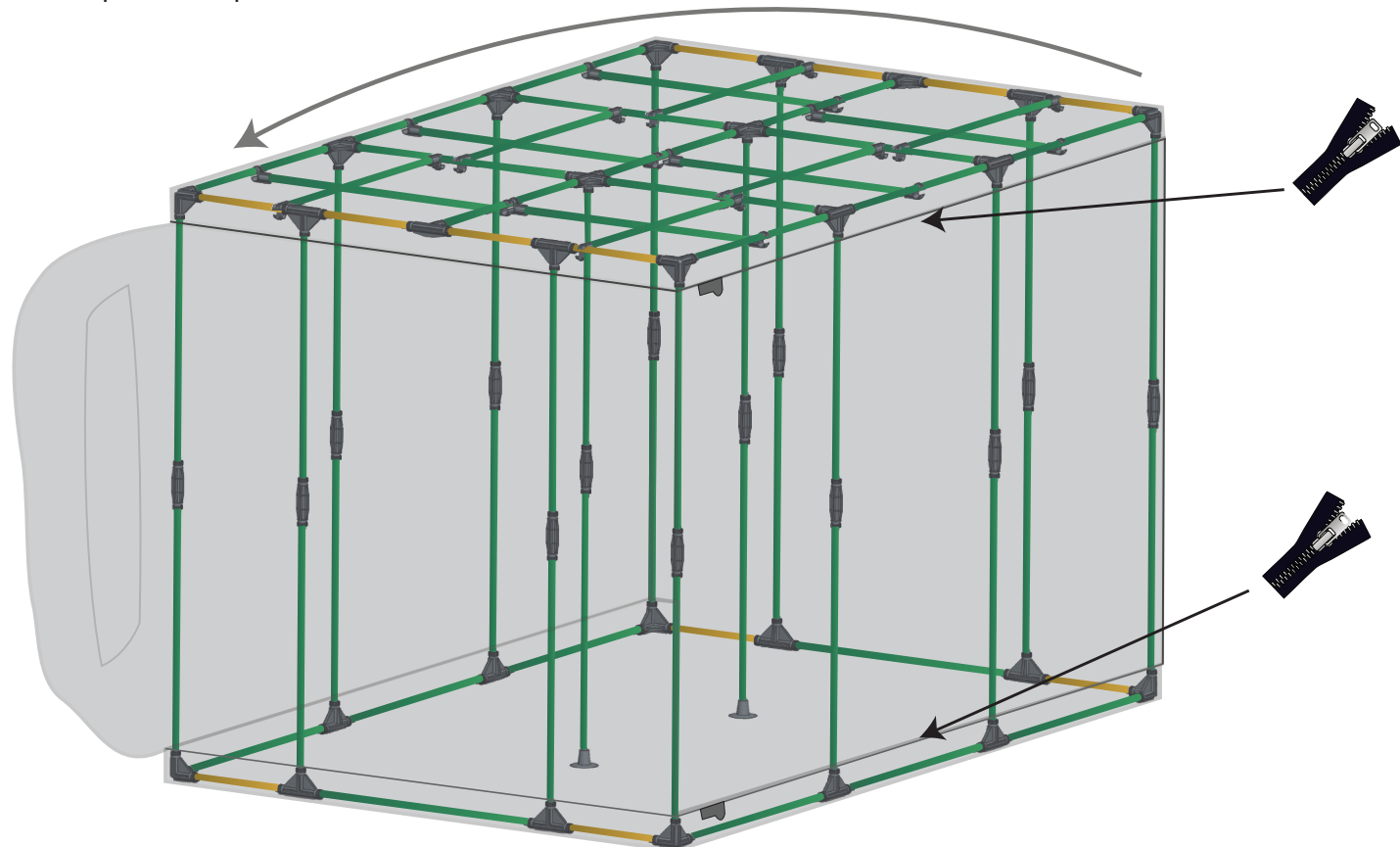


NOTE

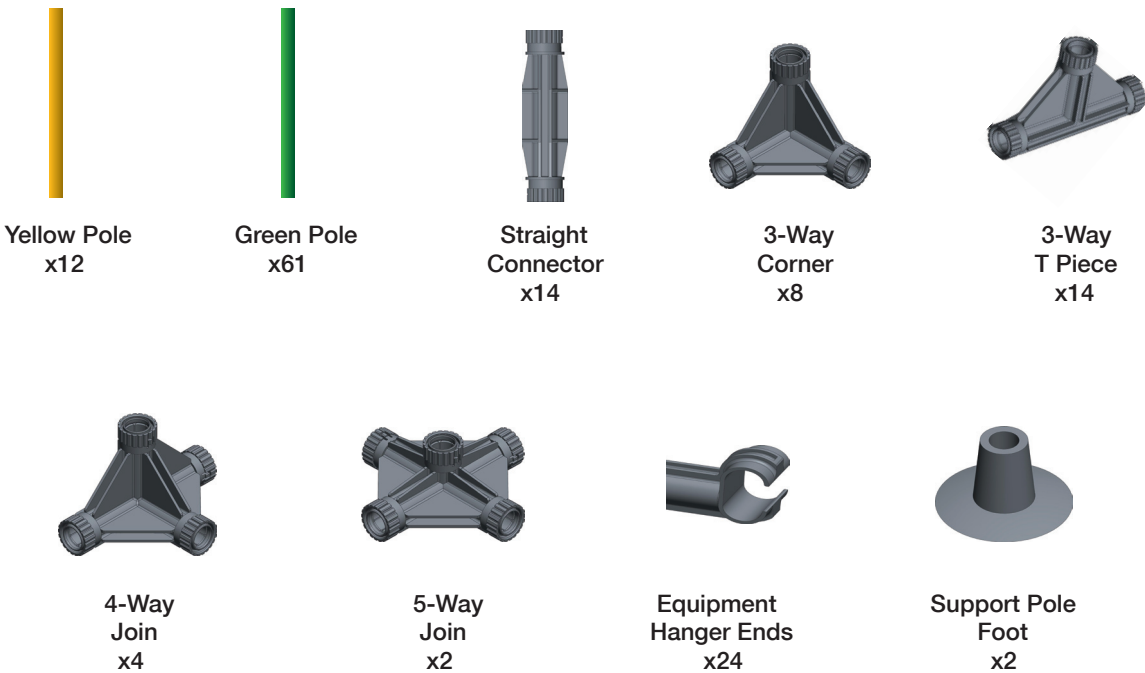


Step 6

Zip the wall panel to the roof and base.

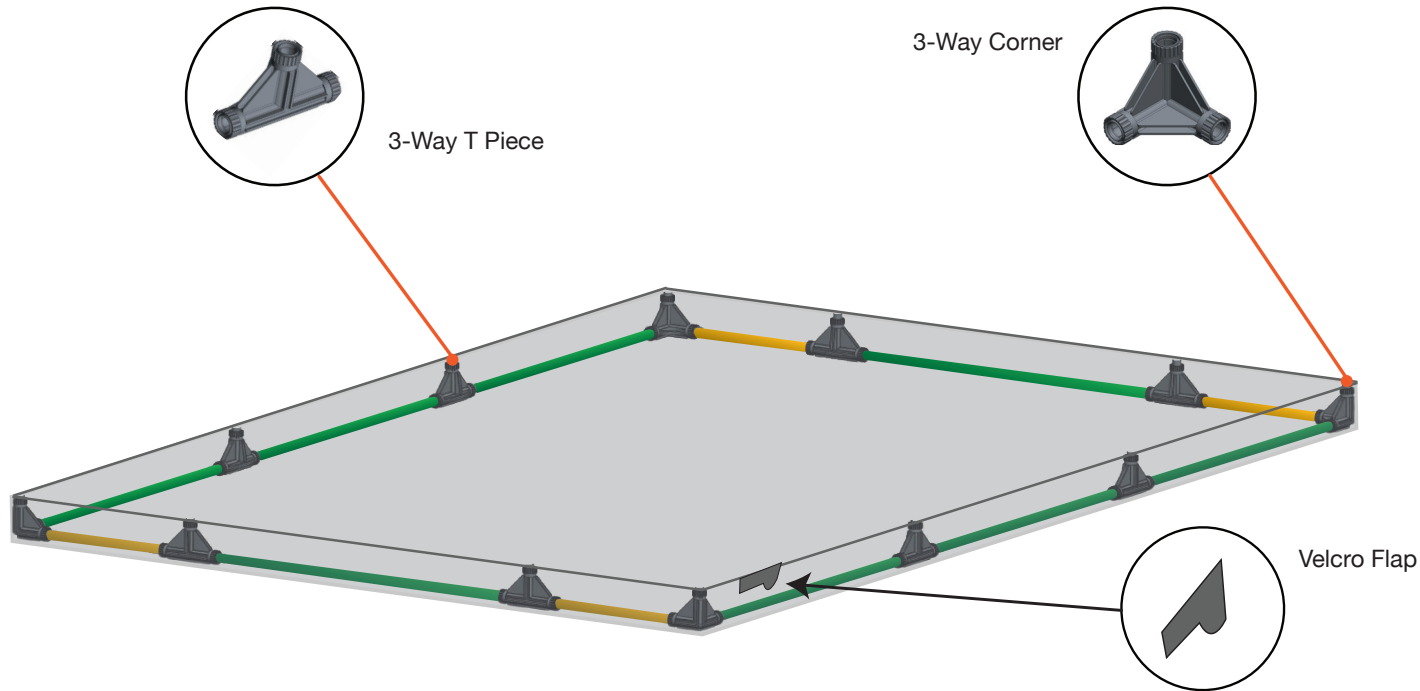


Parts List



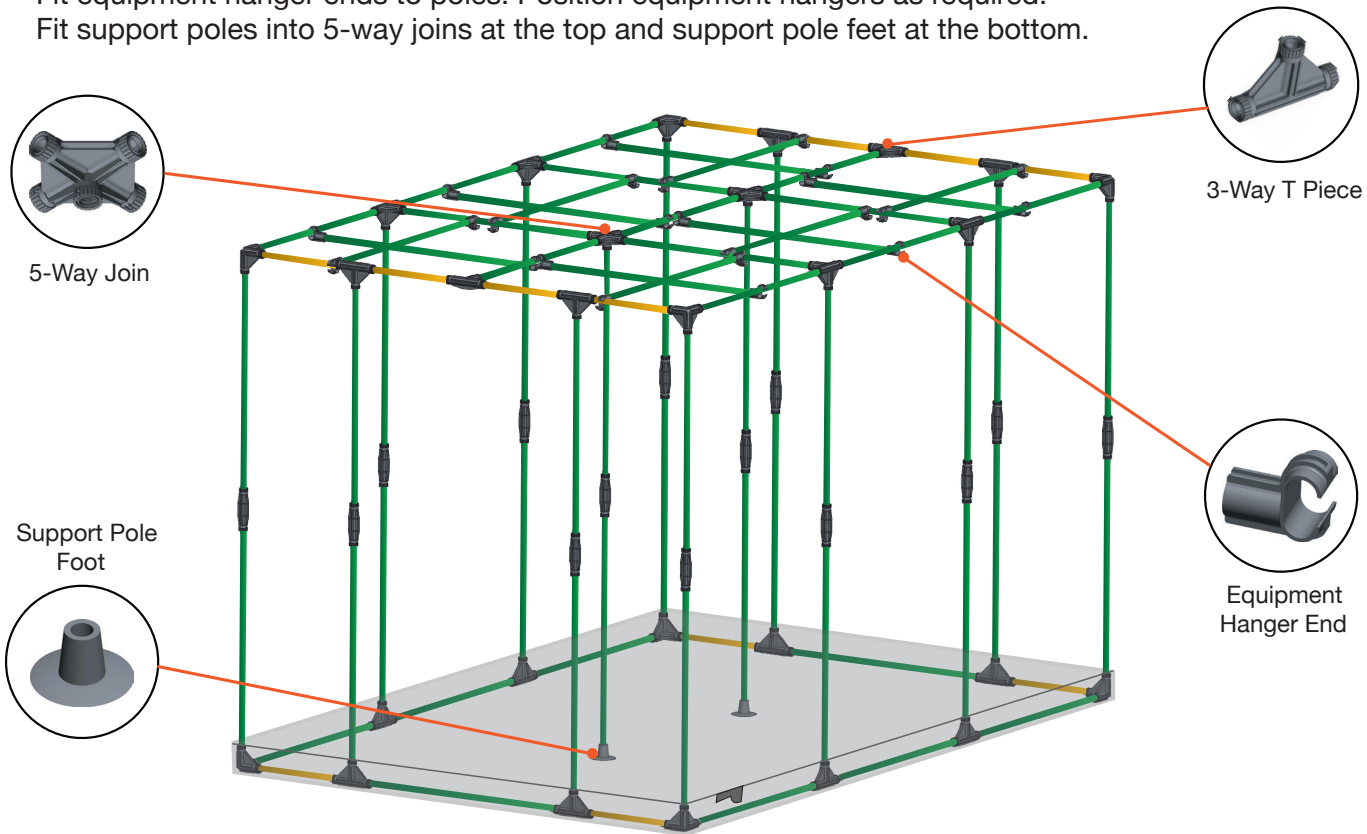
Step 1

Lay out base ensuring Velcro flap is in front right corner.
Assemble floor poles, 3-way corners and 3-way T pieces as shown.



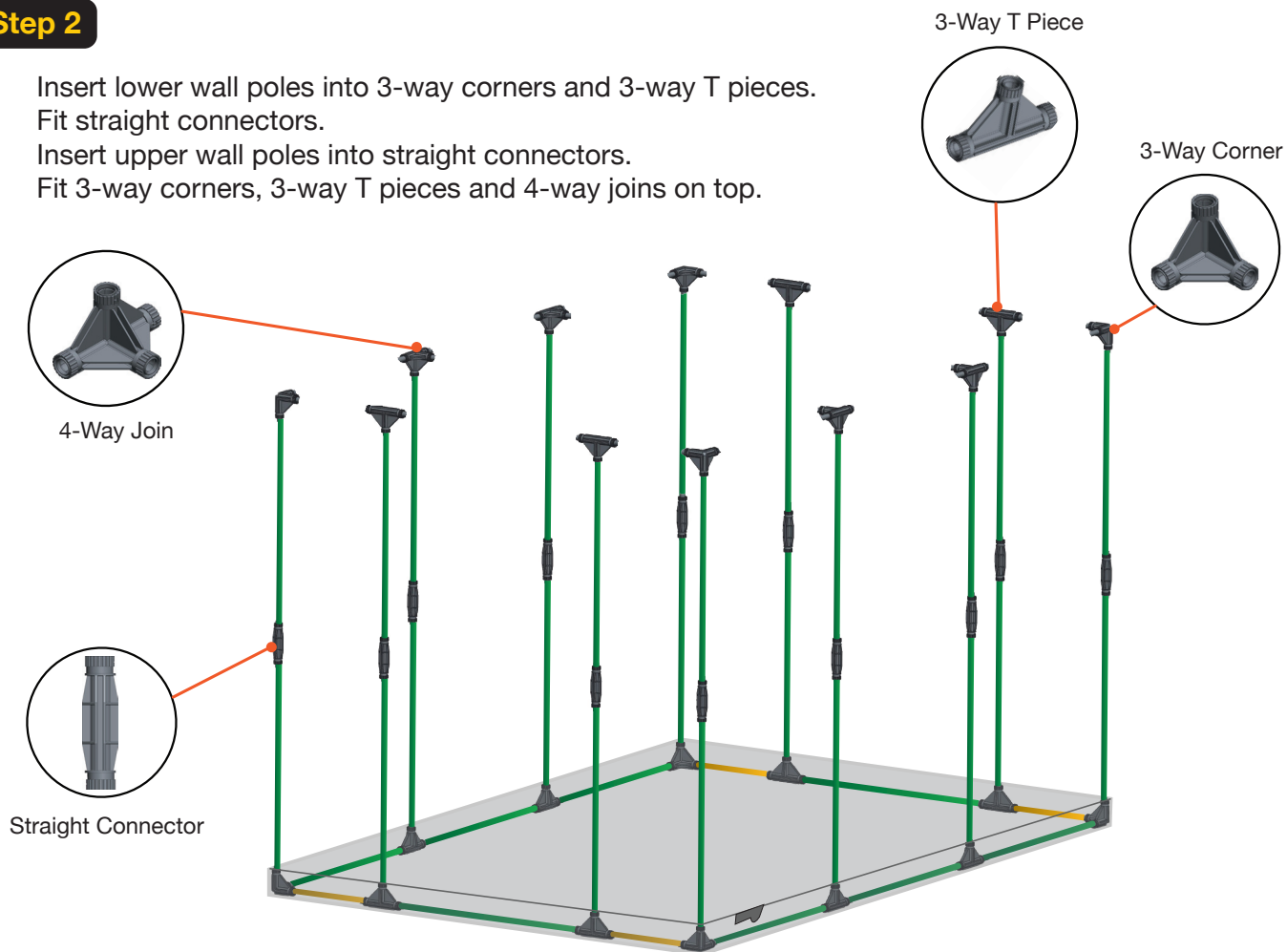
Step 3

Insert ceiling poles into 3-way corners, 3-way T pieces, 4-way joins and 5-way joins.
Fit equipment hanger ends to poles. Position equipment hangers as required.
Fit support poles into 5-way joins at the top and support pole feet at the bottom.



Step 2

Insert lower wall poles into 3-way corners and 3-way T pieces.
Fit straight connectors.
Insert upper wall poles into straight connectors.
Fit 3-way corners, 3-way T pieces and 4-way joins on top.



Step 4

Fit roof ensuring Velcro flap is in front right corner.

